



# Mobile Fingerprint Fuming Chamber

for the cyanoacrylate development  
of fingerprints on non-porous surfaces





## Portable & Professional Processing

Not every circumstance allows for evidence to be easily transported to a laboratory for processing. Our solution is the **MINIfume** cyanoacrylate fuming chamber, integrated into a heavy duty portable rolling case, making it transportation and storage safe and easy.

**MINIfume** functions just like our larger **MEGAfume** chambers, even utilizing the same user-friendly touch-screen display, and is suitable for processing fingerprints on a variety of non-porous materials.

### Advantages at a Glance

#### Easy Cleaning

The stainless steel interior of the chamber is smooth and easy to decontaminate. All of our evidence racks, hooks, and clips are also stainless steel and dishwasher-safe. The coating of our anodized aluminium water reservoir and heating plate make them easy to wipe down.

#### Keep an Eye on Evidence

Monitoring your evidence development process can be vital to obtaining quality results. The large glass viewing panel in the chamber door lets you keep a close watch on evidence and is easy to wipe clean after the chamber has been used.

#### Tool-less Maintenance

The interior circulation fan, evidence racks, and rods can all be easily removed without tools. Our filter system is also designed for fast and easy tool-less filter maintenance.

#### PIN-Secured Access

Secure the system with a customizable PIN, to protect evidence and only give access to authorized users. Use it at the start of a cycle to ensure that the chamber is not opened and the evidence is not disturbed during the development cycle for quality assurance and increased security.



## Advanced Control System

Our full color multi-lingual touch panel display is mounted in a convenient control box. Multiple control options make processing evidence quickly and reliably possible, while our datalogger system provides quality documentation.

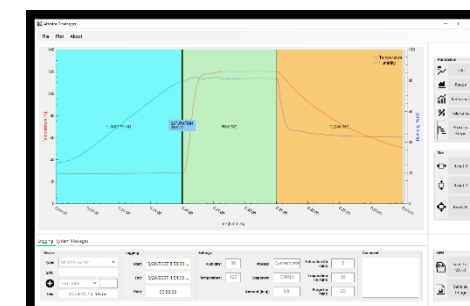
### System Features

#### Pre-programmable Cycles

Like our MEGAfume series, MINIfume can be used with fluorescent or non-fluorescent developers in either liquid or powder form. Pre-programmed cycle options for commonly used developers can be run at the touch of a button. Manual and custom program options give you full control over your development cycle and even save custom cycle settings. The versatility of our system gives you a future-proof advantage to better prepare you for new developers and techniques.

#### USB Process Data Logger

Like our larger laboratory models, **MINIfume** features a data logger system which records all parameters relevant to a development cycle for quality control and documentation.



#### Active Filter Monitoring

Our new filter monitoring system calculates filter life more accurately than other systems, so you get the most out of your filter. The filter management system also alerts users when it's time for maintenance, and the on-screen filter change guide provides simple convenient instructions when it's time for a new filter.

## Optional Useful MINIfume Accessories

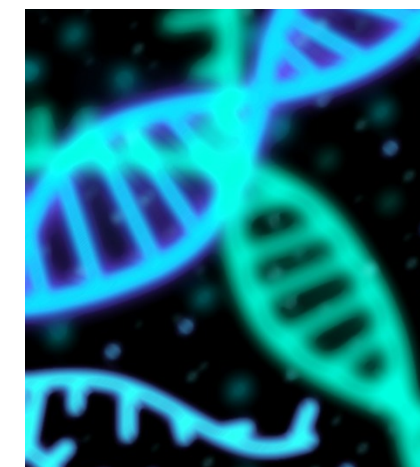


### Starter Development Kit

This kit includes everything you need to start developing prints with your MINIfume. It includes 50mL of high quality standard liquid cyanoacrylate developer, 20 developer pans, as well as 10 clips and 10 hooks, made from stainless steel, for hanging evidence in your fuming chamber.

### UV-C Decontamination Unit

Like our larger MEGAfume units, MINIfume can be equipped with a UV-C decontamination unit. This UV-C unit connects automatically with the system when plugged in and lets you run UV-C cycles to better help break down biological contaminants such as DNA.





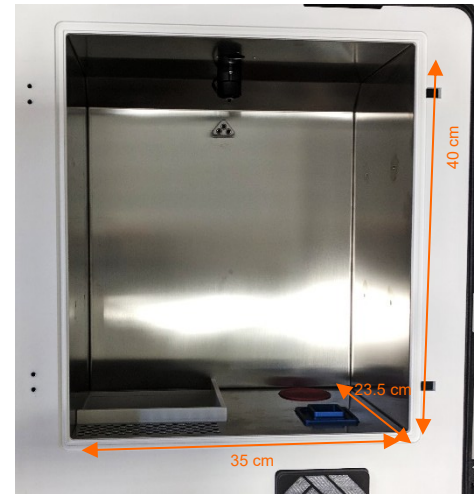


The **MINIfume** is a new addition to the Attestor family, the smaller portable version of our popular **MEGAfume**. **MINIfume** is capable of developing latent fingerprints on non-porous surfaces such as plastic, glass, metal or similar surfaces, using cyanoacrylate developers. Like our other cyanoacrylate fuming chambers, the **MINIfume** can be used with a large variety of fluorescent and non-fluorescent liquid and powder fingerprint developers.

The **MINIfume** is there to bridge the gap between the lab and crime scene, giving you the ability to use high quality forensic fingerprint development equipment to process your evidence and obtain reliable results, even when you don't have the luxury of easy access to a full forensic laboratory. This portable chamber is built into a heavy-duty rolling case, and all of the parts and accessories you'll need for your chamber can be neatly stowed away using lightweight laser-cut foam organizer when the chamber isn't in use, making it practical for both transportation and storage.

The **MINIfume** utilizes our new control box panel, which features an integrated full-color multi-lingual touch screen display. The interface is nearly identical to our user-friendly **MEGAfume** series, making it easy to learn how to use. It also has several new features, including the newest version of our datalogger and our on-screen information guide to help with simple maintenance tasks like filter changes.

Like our other cyanoacrylate fuming chambers, the **MINIfume** is able to run fully self-contained cycles without the need of an external ventilation system. Once a process is started, every step can be completed without opening the chamber, and the purge process at the end of every cycle ensures that any leftover harmful fumes in the chamber are filtered out before the chamber door is opened after evidence is developed, both increasing user safety and decreasing the chances of evidence becoming overdeveloped. When cycles are finished, the chamber is designed to be easy to clean and maintain without any special tools or training. Stainless steel and glass chamber construction make fast and thorough decontamination possible. Evidence racks, brackets, pins, rods, and clips are all made from stainless steel and are dishwasher safe to simplify cleanup.



## Technical Data

MINIfume	
Exterior Dims (HxWxD)	68.5 x 53 x 36.5 cm
Interior Dims (HxWxD)	40 x 35 x 23.5 cm
Levels	2
Fuming Temperature	100°C - 230° C
Humidity Range	60 – 90% RH
Air Filter System	Integrated Activated Carbon Filter Cassette (approx. 180 cycles, with standard amount of pure cyanoacrylate)
Electrical Data	
Voltage:	230V/50Hz AC (ap115V / 60 Hz in preparation)
Power:	max. 500 W
Current:	ca. 5 A

## Authorised Reseller:



### Attestor Forensics GmbH

Zeppelinstr. 28  
D-88410 Bad Wurzach

[attestor@attestor-forensics.com](mailto:attestor@attestor-forensics.com)

[www.attestor-forensics.com](http://www.attestor-forensics.com)

This is a product info brochure. Images might not be true to scale. Binding is solely the separately available technical specification. Attestor Forensics GmbH reserves the right to alter the design or specification without prior notice.

Version 250425\_03\_EN

